

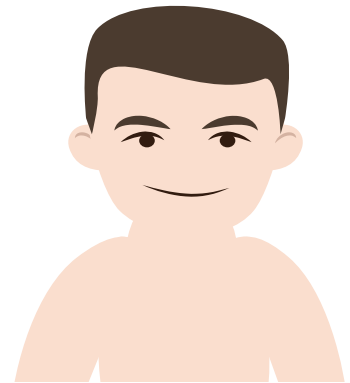
HYPOTHYROIDISM

Recognizing the clinical presentation of hypothyroidism

Hypothyroidism is due to low levels of thyroid hormone.

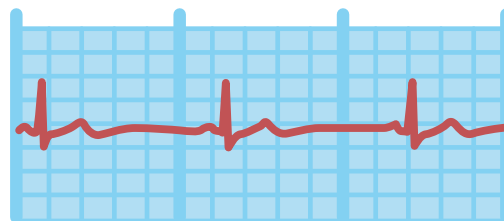
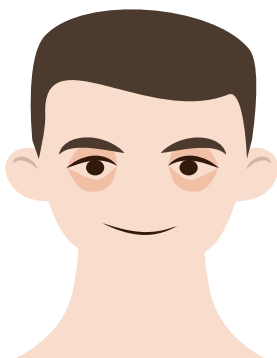
Patients with hypothyroidism have a number of clinical symptoms:

- Fatigue
- Cold intolerance
- Constipation
- Dry skin
- Difficulty concentrating
- Weight gain



They will have clinical signs that you can detect on exam:

- Periorbital edema
- Dry, doughy skin
- Delayed reflexes
- Bradycardia



Symptoms can be subtle, however, and diagnosis must be confirmed with lab tests.