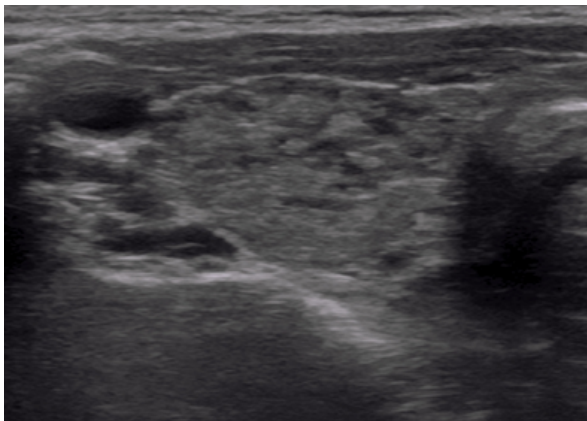


THYROID IMAGING

Recognizing abnormalities on a thyroid ultrasound

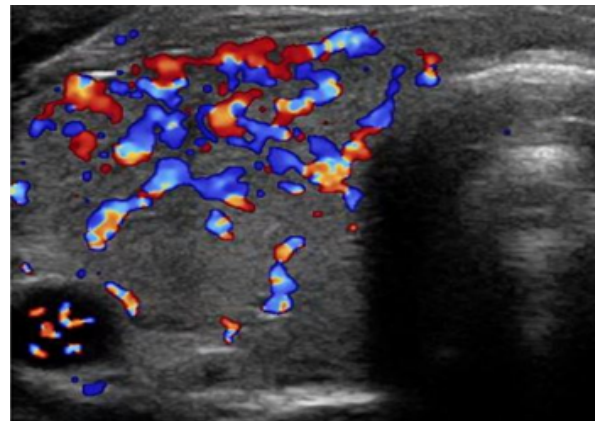
Ultrasound can be helpful in determining the underlying cause of a patient's thyroid dysfunction.

Hypothyroidism due to autoimmune thyroid disease will often show a diffusely enlarged, heterogeneous thyroid gland.



Enlarged and heterogenous

Hyperthyroidism due to increased stimulation of the thyroid gland shows an enlarged, hypervascular gland.



Increased vascularity

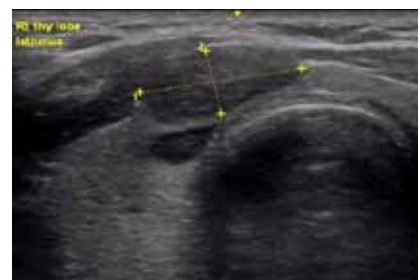
Thyroid nodules can also be seen on ultrasound, but ultrasound is not able to differentiate between the different causes of thyroid nodules.



Hyperfunctioning nodule



Benign non-functioning nodule



Papillary thyroid cancer

Further reading

Lupo MA and Levine RA. Ultrasound of Diffuse Thyroid Enlargement: Thyroiditis. *Thyroid Ultrasound and Ultrasound-Guided FNA*. Eds. Baskin HJ, Duick DS and Levine RA. New York: Springer. 2013. p. 99–126.

Mandel SJ and Langer JE. Ultrasound of Nodular Thyroid Enlargement. *Thyroid Ultrasound and Ultrasound-Guided FNA*. Eds. Baskin HJ, Duick DS and Levine RA. New York: Springer. 2013. p. 127–148.