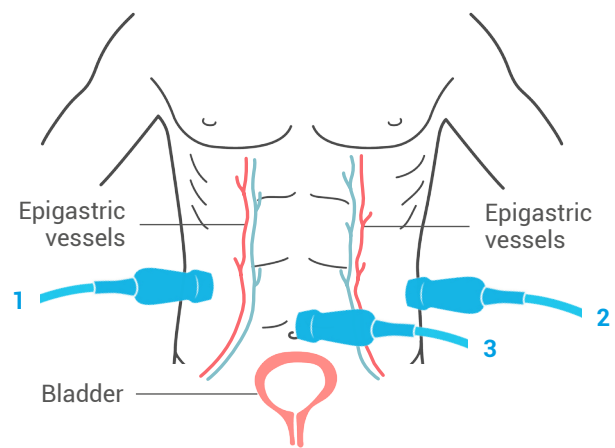
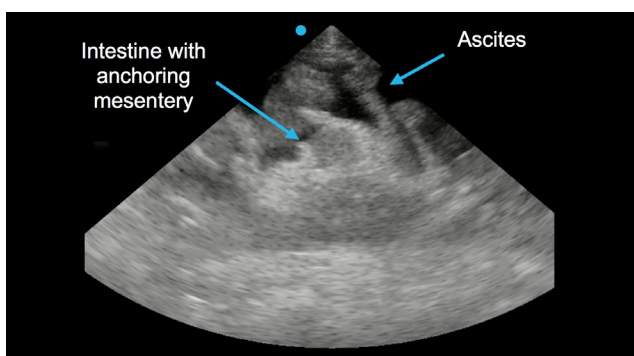


# ULTRASOUND GUIDED PROCEDURES

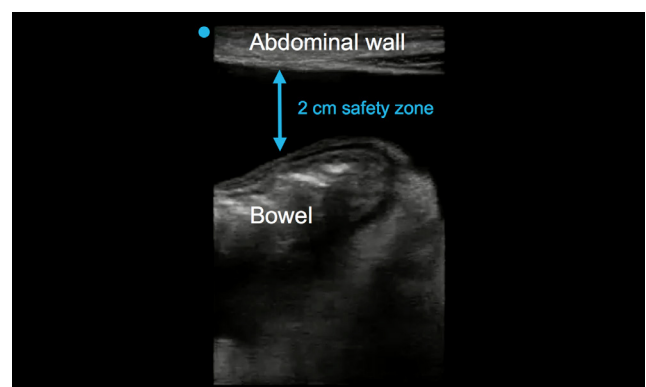
## Paracentesis

Use a lower frequency probe to evaluate the area and mark for a static approach. If you choose to perform the procedure dynamically, switch to a linear probe for better visualization of the needle.



You can place your probe in one of three locations for performing a paracentesis. The preferred location is either in the right lower quadrant (RLQ) or left lower quadrant (LLQ). The midline approach is associated with an increased risk of iatrogenic injury.

Ensure at least 2 cm of fluid, without any structures or vessels, for a safe procedure.



*If performing midline, ensure that the bladder has been emptied to minimize the risk of bladder puncture.*