

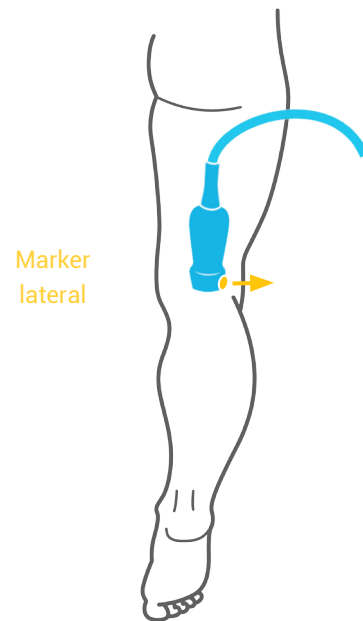
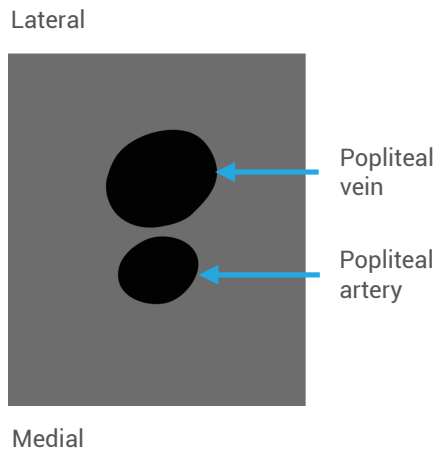
# LOWER EXTREMITY STUDY (DEEP VENOUS THROMBOSIS)

## Evaluating the popliteal region for an acute DVT

The patient should be placed in the prone position, preferably.



Using the linear probe, placed high in popliteal fossa, evaluate for the trifurcation of veins (anterior tibial, posterior tibial, peroneal). From that point, scan proximally for 5 cm, with compression every 1 cm.



### Compression test

With the probe over the vein, push down on the leg and see that the vein completely collapses (winks at you!). If it does not compress, or only partially compresses, with pressure, this is a positive study for an acute DVT.

