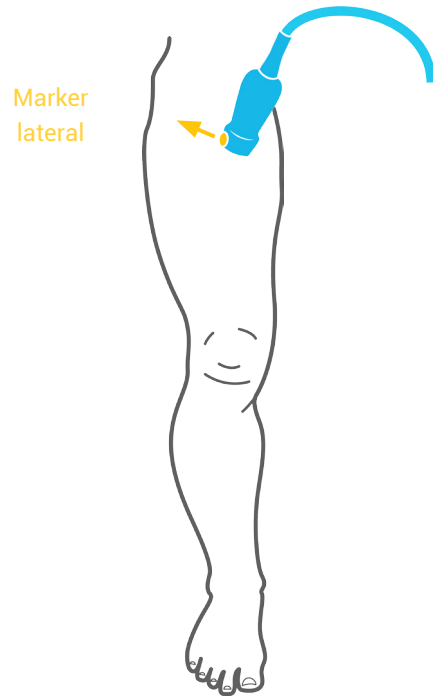
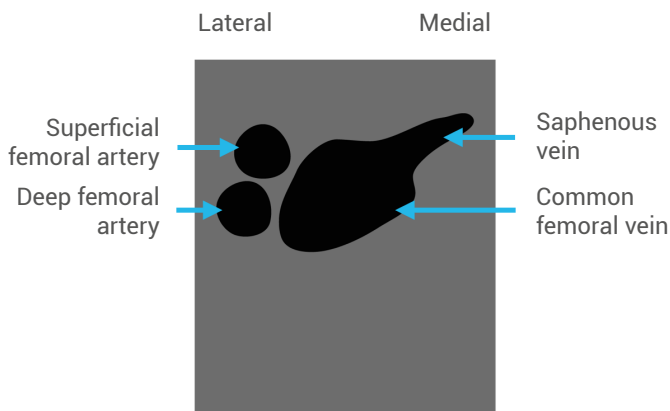


LOWER EXTREMITY STUDY (DEEP VENOUS THROMBOSIS)

Evaluating the femoral region for an acute DVT

Using the linear probe, placed high in the inguinal region, evaluate the proximal femoral vein. Scan distally for 5 cm, with graded compression every 1 cm, to evaluate for vein collapsibility.



Compression test

With the probe over the vein, push down on the leg and see that the vein completely collapses (winks at you!). If it does not compress, or only partially compresses, with pressure, this is a positive study for an acute DVT.

