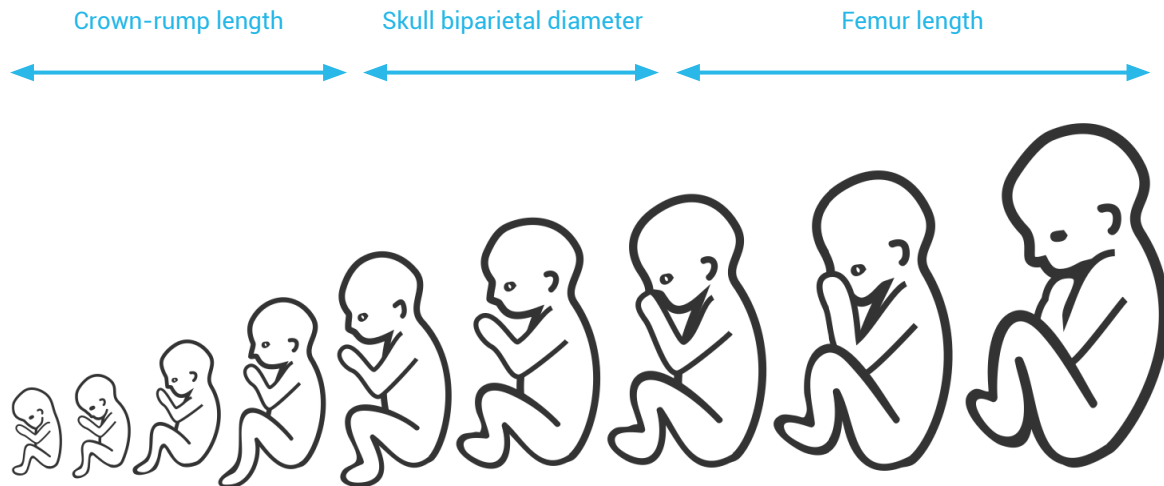


# FIRST TRIMESTER PREGNANCY

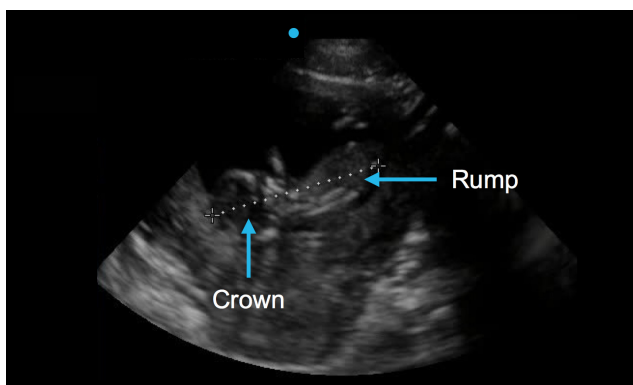
## Determining gestational age

There are various techniques for confirming gestational age, based on the estimated gestational age per last menstrual period.



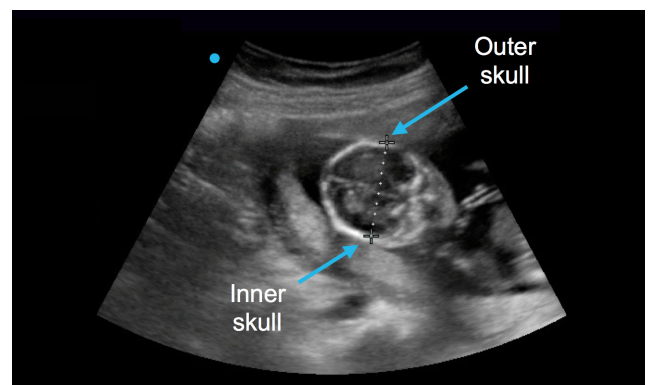
### Crown-rump length

Measure the longest length from the crown (head) to the rump (buttocks).



### Biparietal diameter

Measure the outer wall to inner wall of the skull at the level of symmetric ventricles (level of thalamus).



(Femur length is not used until later in pregnancy.)