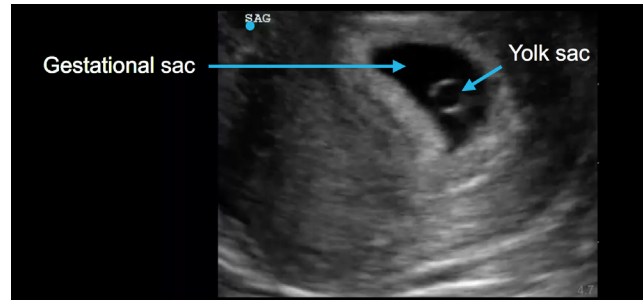


FIRST TRIMESTER PREGNANCY

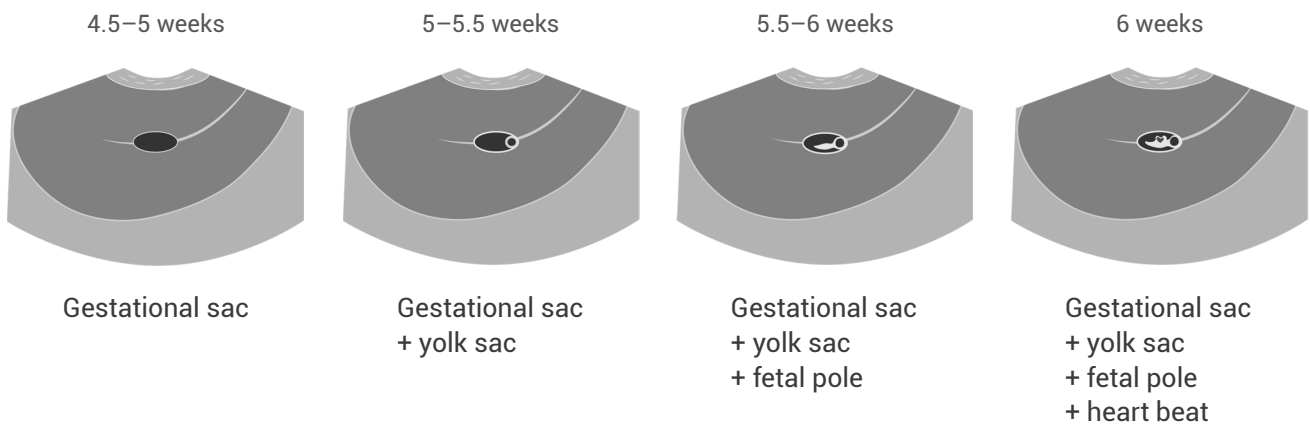
Confirming a definitive intrauterine pregnancy

To confirm a definitive intrauterine pregnancy on an ultrasound, you need to find a gestational sac and a yolk sac within the uterus.



Gestational age

Depending on gestational age, you can expect different findings on ultrasound.



With a transabdominal probe you can expect to see things about one week later than when using an endovaginal probe. For example, you would first see the gestational sac at 5.5–6 weeks (not at 4.5–5 weeks).

Fetal heart rate

You can use M-mode to calculate the fetal heart rate (normal is 120–160 bpm).

