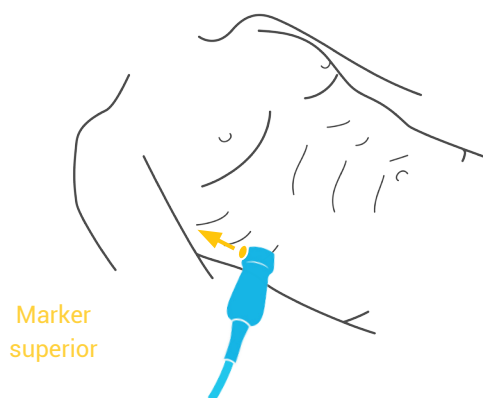


# RENAL AND BLADDER

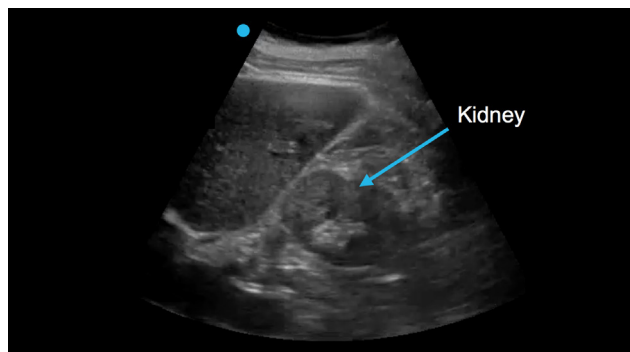
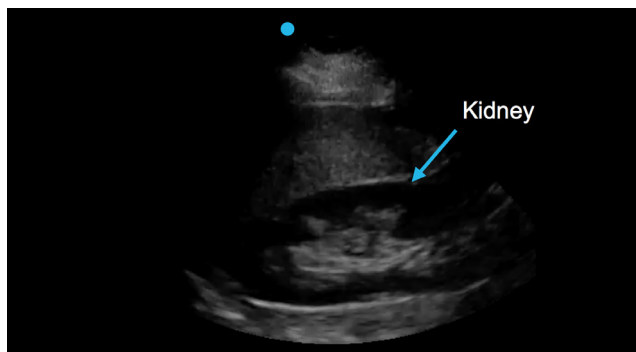
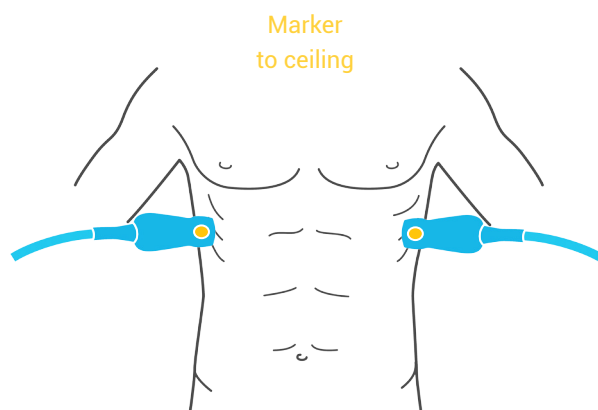
## Performing a renal study

Using a low frequency probe, placed in a coronal cross section in the lower rib spaces, examine the kidneys. Orient the indicator to the patient's head for a long-axis view, and rotate the probe 90 degrees, with the indicator pointing towards the ceiling, for a short-axis view.

### Renal, long-axis view



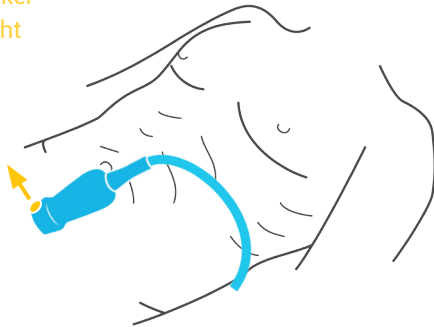
### Renal, short-axis view



Using a low frequency probe, placed low over the suprapubic region and pointed down towards the patient's feet, examine the bladder. Orient the indicator to the patient's right for a short-axis view, and towards the patient's head for a long-axis view.

### Bladder, short-axis view

Marker  
right



### Bladder, long-axis view

Marker  
superior

