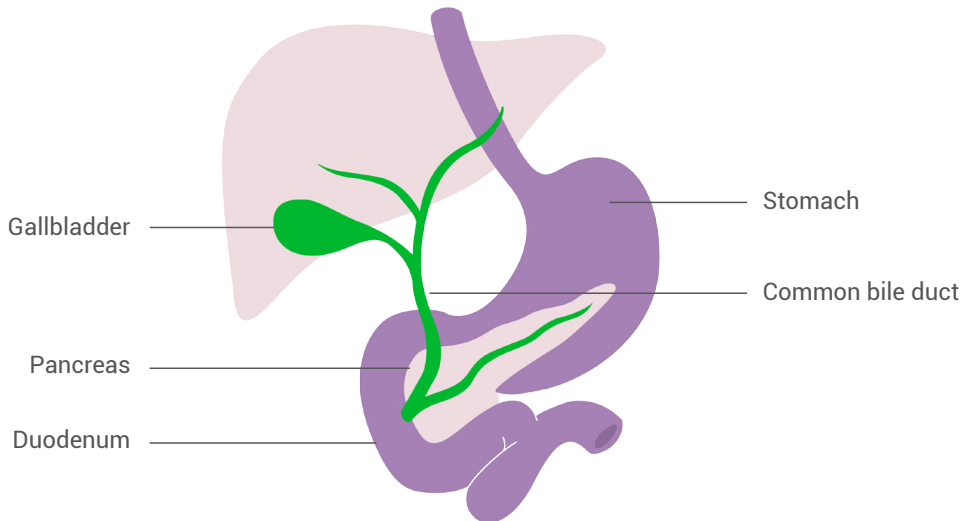
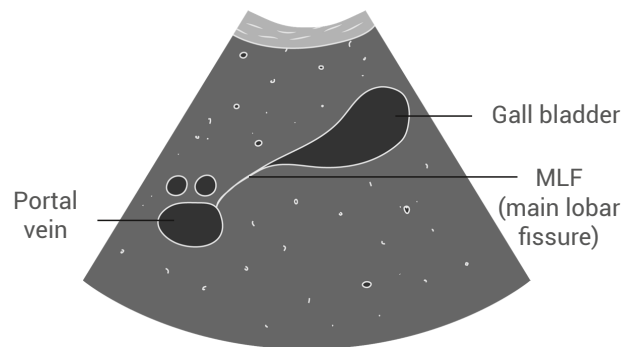


HEPATOBIILIARY

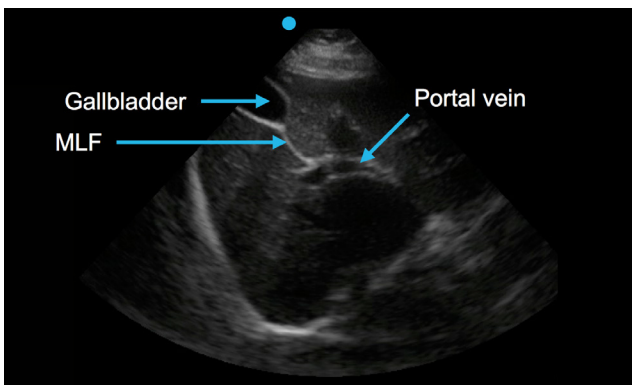
Imaging the common bile duct



When finding the common bile duct, look for the portal triad, specifically the portal vein (it will be a bright-white walled, vascular structure). The common bile duct should be right above it. A normal common bile duct diameter is less than 0.6 cm until the age 60. After that, you are allowed an increase of 0.1 cm for each decade. For example, at age 70, a normal width is less than 0.7 cm.



Portal triad



Portal triad

