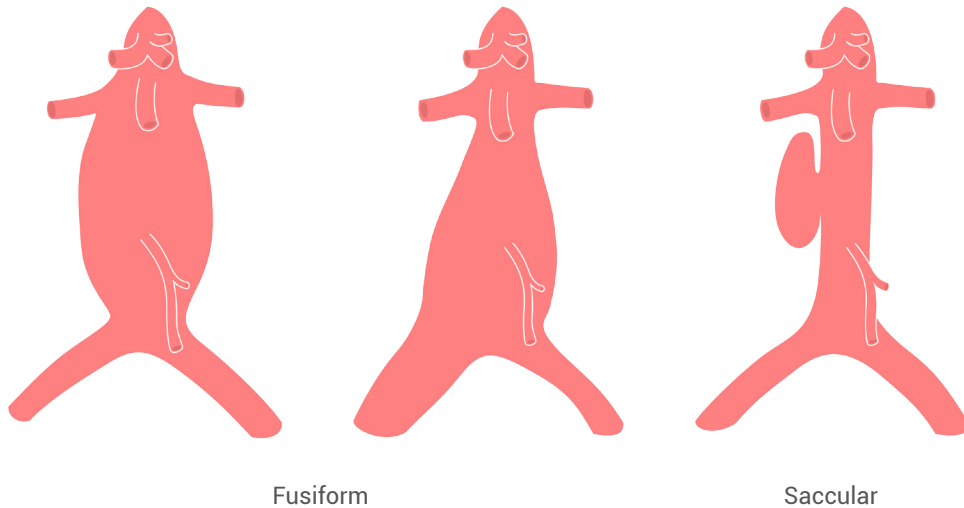


ABDOMINAL AORTA

Evaluating for an abdominal aortic aneurysm

There are two types of aneurysm: fusiform and saccular. Fusiform is more common.



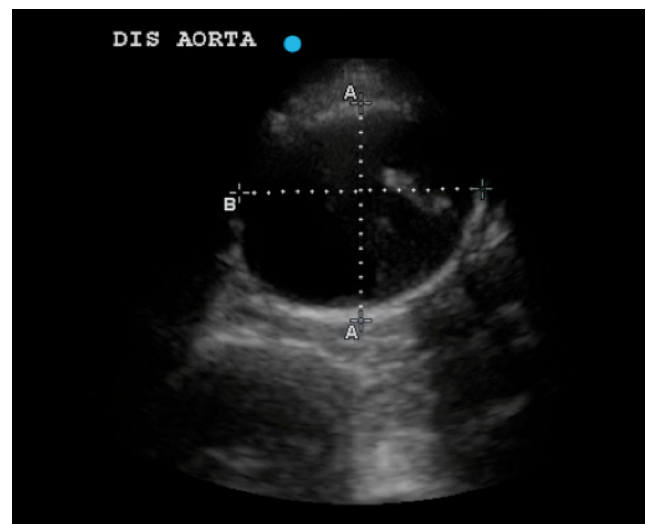
When measuring the aorta, place calipers from the outer wall to the outer wall.

Abdominal aortic aneurysm

= dilation of the aorta over 2 cm

Iliac aneurysm

= dilation of the iliac artery over 1.5 cm



Remember, the aorta lies in the retroperitoneal space so a ruptured AAA will not give a positive FAST exam (a FAST exam identifies free fluid or blood in the peritoneal space).