

INFERIOR VENA CAVA (IVC)

Knowing when to perform an IVC study

The inferior vena cava (IVC) is a good indicator of current volume status. It can have many clinical applications especially in the setting of sepsis, or during resuscitation.

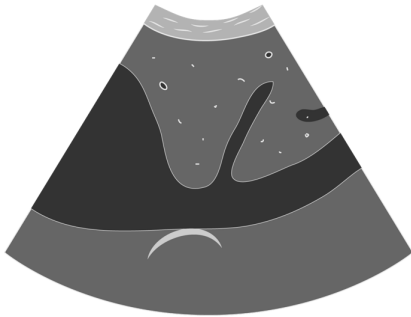
Normal IVC

We expect to see a slight decrease in the diameter of the IVC during a normal respiratory cycle. Clinically this translates into a “fluid tolerant” state.

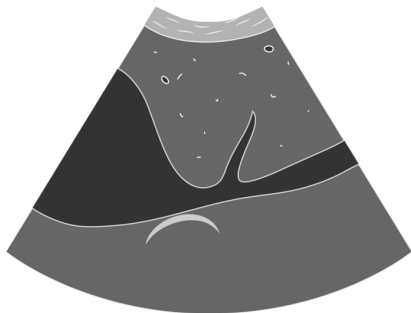
Hypervolemic

If there is no, or very little, variation in the diameter of the IVC with respirations, the patient is likely in a hypervolemic or “fluid intolerant” state.

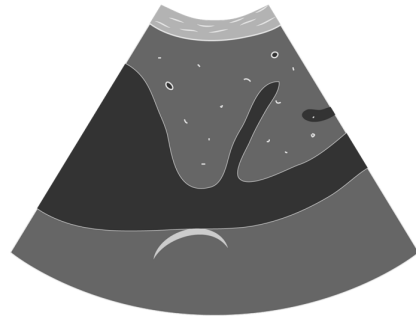
Before inspiration



After inspiration



Before inspiration



After inspiration

