

POCUS 101

Understanding knobology

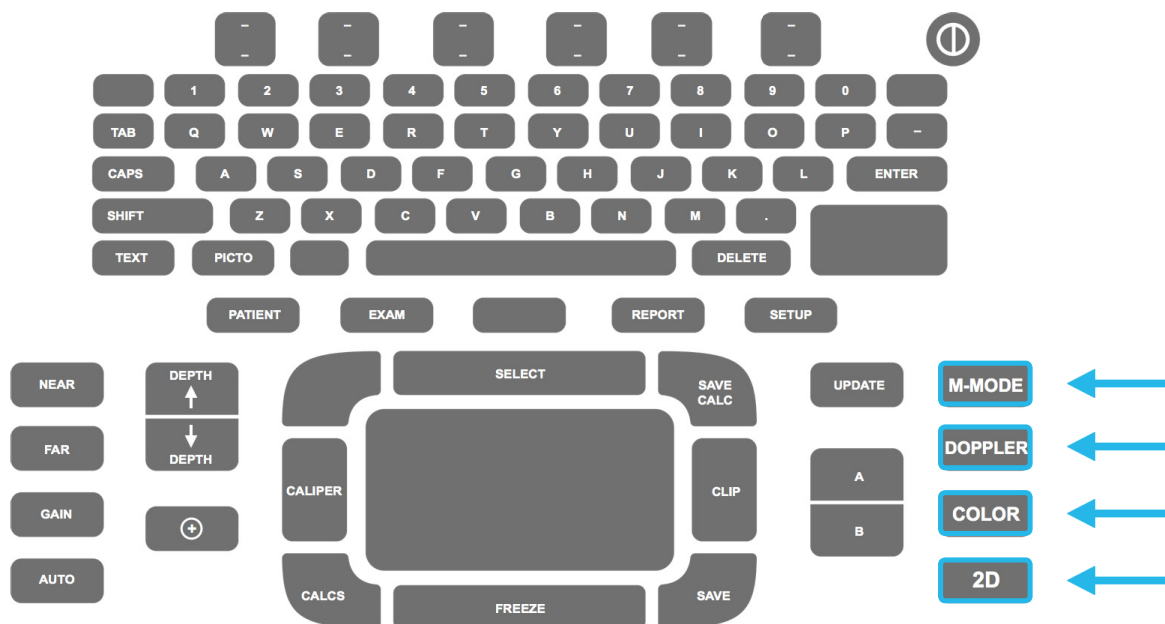
Knobology: *The functionality of controls on an instrument as relevant to their application.*

M-mode

M-mode is used when you want to know if a particular structure is moving or not. In this mode, you can also perform certain calculations based on the rate of movement.

Doppler

Doppler can reliably differentiate a vein from an artery by highlighting the rate of flow (which is reliably different in a vein and an artery). If you place the Doppler calipers within a vessel, you will produce a sound based on the flow within that vessel. A pulsed flow will correspond to an artery, whereas a steadier, passive, flow will be of a vein.



Color (Doppler)

Color Doppler is great for identifying vascular structures, or anything that has flow.

2D

Pressing 2D will return your screen to scanning mode. If you are ever lost and want to start again, hit 2D.