

Vascular ultrasound

DIAGNOSING A GREAT VESSEL DISSECTION

Point-of-care ultrasound allows for rapid bedside diagnosis of a dissection of the aorta or other major arteries. It is specific enough to allow for diagnosis, but not sufficiently sensitive to rule out a dissection. Identifying a dissection can help in the care of patients too unstable to be transported for other imaging.

Technique

Select a transducer based on the location of the target vessel.

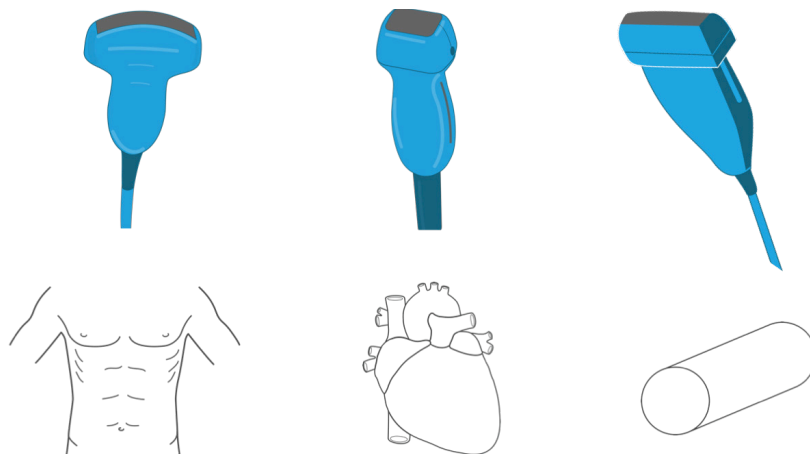
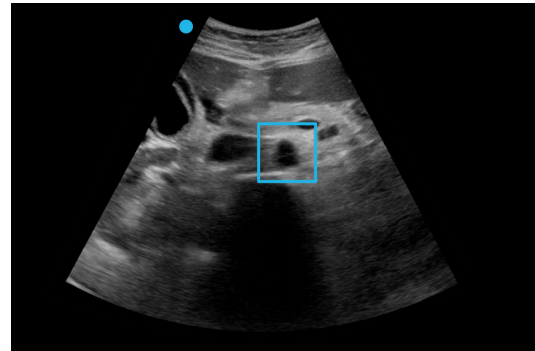
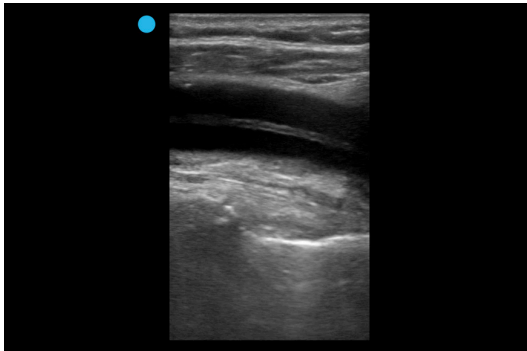


Image suspected dissections in long- and short-axis.

Not all vessels may be visible due to patient habitus, but you can establish the diagnosis by checking for distal propagation of the dissection flap.

Recognizing dissection

Dissections appear as a hyperechoic band passing through a vessel.



Color Doppler can be used to show flow in the true and false lumen of the dissecting vessel.

